

Diritti riservati

All rights reserved

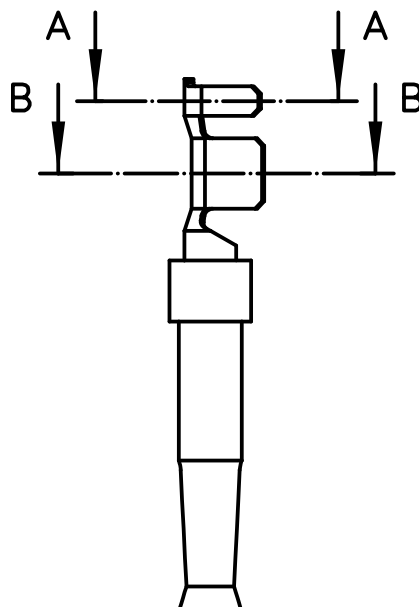
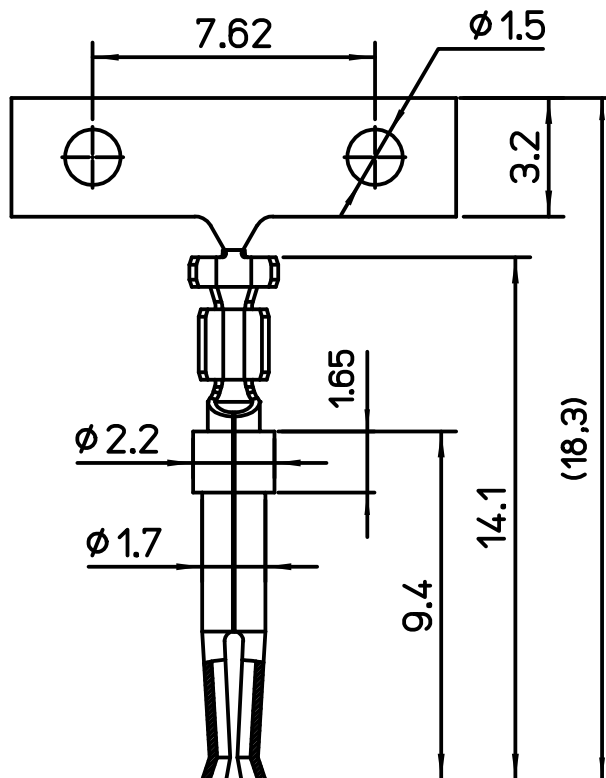
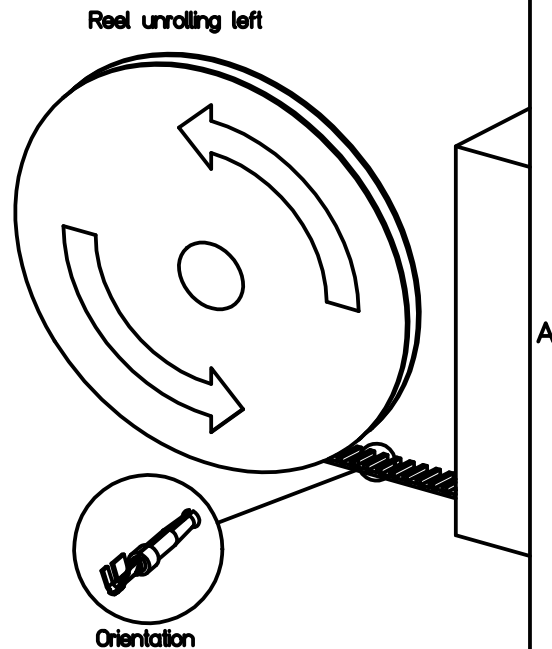
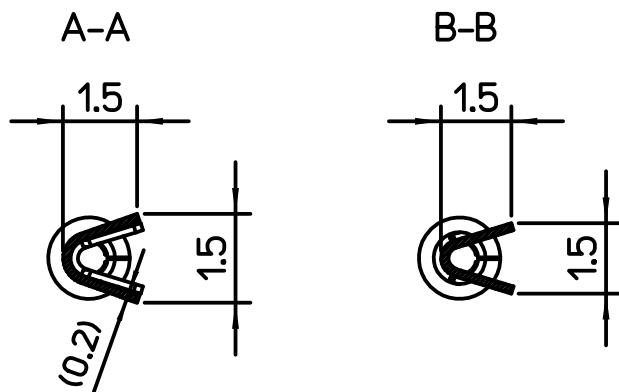
A

B

C

1

2



ILME CODE	PERFORMANCE LEVEL
SIF1D 0.2R	PL1
SIF2D 0.2R	PL2
SIF3D 0.2R	PL3

-Selective Gold plating over Nickel in the contact area, tin plating in the crimp area, RoHS conform  
-Material: brass (leadfree)  
-Reel of 10000 contacts

REV	DATA	FIRMA	
Simplified representation with dimensions without tolerance			
Original Size A4			
Date 29/10/19			
Sign. Pitasi			
SIFxD 0.2R			Scale 5:1
Stamped female crimp contacts 5A 0.08-0.22mm <sup>2</sup> , 24-28 AWG			ILME

1

2

A

B

C